

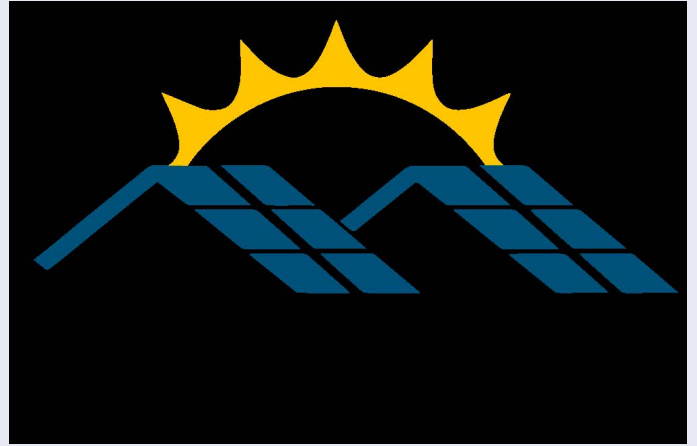
SL606 260-285 WATT POLY CRYSTALLINE MODULE

260 -285 Wp Power Output Range

Positive power tolerance of 0/+3%

Maximum efficiency of 16.9%

60 cells polycrystalline module



Excellent Low Irradiance Performance

- Advanced surface texturing
- Back surface field
- Selective emitter

Maximize Limited Space

- 60-cell module power output up to 285 Wp
- Up to 174 W/m² power density



High reliable due to stringent quality control

- All modules have to pass electroluminescence (EL) inspection
- Over 10 in-house tests (UV, TC, ISO,)
- Excellent PID resistance
- 1000 V UL/1000 IEC certified.



Certified to withstand severe environmental conditions

- Anti-reflective & anti-soiling minimise power loss from dirt and dust
- Severe salt mist, ammonia & blown sand resistance, for seaside, farm and desert environments
- Excellent mechanical load 2400 Pa (130 Km/h) & snow load 5400 Pa resistance (900 Kg) per module

Warranty

25
YEARS

Linear power output warranty

12
YEARS

Guarantee manufacturing product defect

MANAGEMENT SYSTEM CERTIFICATES

ISO 9001: 2008: Quality Management System

ISO14001: 2004 : Standards for Environmental Management System

OHSAS 18001: 2007: Occupational Health and Safety Management System

PRODUCT CERTIFICATES

IEC61215/IEC61730/IEC61701/IEC62716

UL 1703



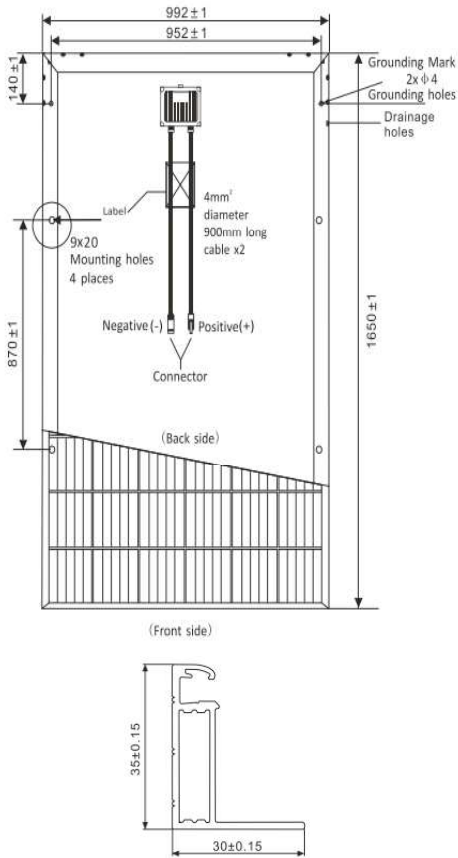
KEY SALIENT FEATURES

LINEAR PERFORMANCE WARRANTY

12 Years Product Warranty / 25 Years Linear Power Warranty

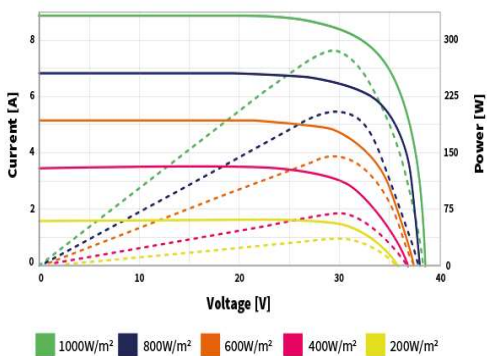
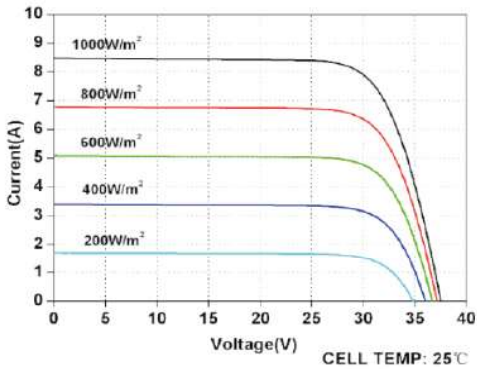


SL 606 260P-285P PV MODULES



SL 606-285 Wp

I-V characteristics at different irradiances



ELECTRICAL DATA@STC	SL606-265	SL606-270	SL606-275	SL606-280	SL606-285
Peak Power Watts - Pmax (Wp)	265	270	275	280	285
Power Output Tolerance- Pmax (W)	0/+3	0/+3	0/+3	0/+3	0/+3
Maximum Power Voltage- V _{mpp} (V)	31.96	32	32.01	30.6	31.14
Maximum Power Current- I _{mpp} (A)	8.30	8.44	8.60	9.14	9.15
Open Circuit Voltage- V _{oc} (V)	38.35	38.4	38.42	38.60	38.72
Short Circuit Current (A)	8.84	8.99	8.99	9.66	9.74
Module Efficiency η _m (%)	16.30	16.60	16.9	16.5	16.9

STC: Irradiance 1000 W/m², Cell Temperature 25°C, Air Mass AM1.5
* Measuring tolerance: ±3%

ELECTRICAL DATA@NOCT	SL606-265	SL606-270	SL606-275	SL606-280	SL606-285
Peak Power Watts - Pmax (Wp)	260	270	275	280	285
Maximum Power Voltage- V _{mpp} (V)	28.6	28.7	28.9	29.0	29.2
Maximum Power Current- I _{mpp} (A)	6.89	6.97	7.03	7.10	7.18
Open Circuit Voltage- V _{oc} (V)	36.2	36.2	36.2	36.2	36.2
Short Circuit Current (A)	9.1	9.1	9.1	9.1	9.1

NOCT: Irradiance at 800 W/m², Ambient Temperature 20°C, Wind Speed 1 m/s.

MECHANICAL DATA

Solar Cells	Multicrystalline 156.75 × 156.75 mm
Cell Orientation	60 cells (6 x 10)
Module Dimensions	1650 × 992 × 35 mm
Weight	22 kg
Glass	3.2 mm, high transparency, AR coated and heat tempered solar glass
Backsheet	White
Frame	Silver Anodized Aluminium Alloy
J-Box	IP 67 or IP 68 rated
Cables	Photovoltaic Technology Cable 4.0mm², 1000 mm
Connectors	EU Countries: 28 MC4 / UTX / TS4, Non-EU Countries: 28 QC4 / TS4

TEMPERATURES RATINGS

Nominal Operating Cell (NOCT)	44°C (+-2K)
Temperature Coefficient of Pmax	-0,41 %/°C
Temperature Coefficient of Voc	-0,31 %/°C
Temperature Coefficient of Isc	0,06 %/°C

MAXIMUM RATINGS

Operational Temperature	-40 tp +85 °C
Temperature Coefficient of Pmax	1000 VDC (IEC) 1000 VDC (UL)
Max. Series Fuse Rating	15 A
Mechanical Load	5400 Pa
Wind Load	2400 Pa

WARRANTY

12 years Product Warranty
25 years Linear Performance Warranty

PACKAGING CONFIGURATION

Modules per box: 26 pieces
Modules per 40' container: 728 pieces (28 units/container)